



PeeringDB

Use in Latin America

Julimar Lunguinho Mendes <julimar@peeringdb.com>

Carlos Martinez Cagnazzo <carlos@lacnic.net>

Why peering is it important?

- Improved network performance
- Lower costs
- Greater control
- Increase redundancy

What is PeeringDB?

PeeringDB, a nonprofit member-based organization, facilitates the exchange of user maintained interconnection related information, primarily for Peering Coordinators and Internet Exchange, Facility, and Network Operators.

Since 2004, this is a registry of organizations and Autonomous Systems in database with information of the places where they do peering, and what peering policy they have.

What is PeeringDB?

- Physical location Autonomous Systems
- Routing Policy
- Where they have equipment for peering
- Which Internet Exchanges are connected
- Facilities
- Peering IP addressing and speed interfaces

What is PeeringDB?

Basically it is an answer to the question:
Who can I exchange traffic with and where?

The fact that your AS is registered in PeeringDB increases considerably your chances to do peering, as your information gains greater visibility for the world.

PeeringDB – AS Information

It is strongly recommended that all Autonomous Systems interested in performing peering keep the data updated in PeeringDB, since many networks have as peering policy only to exchange traffic with networks registered in PeeringDB.

Colocation providers and IX providers are also encouraged to register.

All information must be updated by the AS / user.

PeeringDB – MANRS recommendation

3. Facilitate global operational communication and coordination between network operators.

- Network operator maintains globally accessible up-to-date contact information.

Discussion:

Common places to maintain such information are PeeringDB, RIRs' whois databases and large IRRs like RADB and RIPE. A network operator should register and maintain 24/7 contact information in at least one of these databases. This contact information should include the operator's current point of contact information for the NOC of the AS, all netblocks, and domain names. Operators are encouraged to document their network routing policies in an IRR. Additional information is also welcome, such as, for example, a looking glass URL in the appropriate field in their PeeringDB record.

References:

- "Using RPSL in Practice", <http://tools.ietf.org/html/rfc2650>
- Peering DB, <https://www.peeringdb.com>
- RADB, <http://www.radb.net/>

Advanced Actions

4. Facilitate validation of routing information on a global scale.

- Network operator has publicly documented routing policy, ASNs and prefixes that are intended to be advertised to external parties.



MANRS

<https://www.manrs.org/isps/>

PeeringDB – IX.br security actions



Núcleo de Informação
e Coordenação do
Ponto BR

versão 2018-08-21-15-08

```
mp-export: to AS52320 announce AS22548 AND {2001:12ff::/32}  
(...)
```

- quais são ASs anunciados via BGP (clientes de trânsito, normalmente) de um determinado AS (AS-SET):

- Por exemplo, ao se consultar o AS22548 no PeeringDB é possível verificar que o seu AS-SET é denominado AS-NIC-BR

```
Organização: NIC.br  
Também conhecido como: Nucleo de Informacao e Coordenacao do  
Ponto BR  
Website da Empresa: http://nic.br  
ASN primário: 22548  
Registro de IRR: AS-NIC-BR  
(...)
```

- Ao se consultar o AS SET AS-NIC-BR nas bases de IRR, pode-se observar que os AS anunciados no BGP pelo AS22548 são os ASs 10906, 11284, 11644, etc:

```
as-set: AS-NIC-BR  
descr: Nucleo de Informacao e Coordenacao do Ponto BR  
members: AS10906  
members: AS11284  
members: AS11644  
members: AS11752  
members: AS12136  
members: AS14026  
members: AS14650  
members: AS20121  
members: AS22548  
members: AS26162  
members: AS53035  
(...)
```

AS-SET field will be used to validate which ASNs can be announced to IX.br by participants.

<http://ix.br/doc/acoes-seguranca-ix-br-20180927.pdf>

PeeringDB – AS informations

PeeringDB team recommends that the Autonomous Systems information on whois (e.g. lacnic.net) be updated with some corporate email.

At the moment of registering the user account in PeeringDB, if the registered e-mail is identical to the one that is in the whois LACNIC database, the approval will be done automatic.

Otherwise the approval will done by a PeeringDB administrator manually and can be deny.

PeeringDB – AS informations

If you have any doubts or errors in PeeringDB please contact the PeeringDB administrators.

All PeeringDB administrators are volunteers.

The team answer quickly.

Contact: support@peeringdb.com

IX.br(PTT.br) – PeeringDB support

NIC.br helps new users with presentations and guides

Guides and presentations are available on the IX.br website or at peeringdb.com

<http://ix.br/doc/PeeringDB.pdf>

http://ix.br/doc/PeeringDB_Cadastro_de_Facilities.pdf


<https://docs.peeringdb.com/>

Normally after presentations there is a increase of new users.

PeeringDB – What do I can register?

- Organizations
- Networks
- Facilities
- Internet Exchanges Points

PeeringDB - public search - network

 Search here for a network, IX, or facility. [Register or Login](#) [Advanced Search](#)

NIC.BR

Organization	NIC.br
Also Known As	Nucleo de Informacao e Coordenacao do Ponto BR
Company Website	http://nic.br
Primary ASN	22548
IRR Record	AS-NICBR-CUST
Route Server URL	
Looking Glass URL	
Network Type	Non-Profit
IPv4 Prefixes	50
IPv6 Prefixes	30
Traffic Levels	1-5Gbps
Traffic Ratios	Balanced
Geographic Scope	Regional
Protocols Supported	<input checked="" type="checkbox"/> Unicast IPv4 <input type="checkbox"/> Multicast <input type="checkbox"/> IPv6
Last Updated	2019-01-23T13:24:50Z
Notes	The Brazilian Network Information Centre - NIC.br was created to implement the decisions and projects designed by the Brazilian Internet Steering Committee - CGI.br, which is responsible for the co-ordination and integration of all Internet service initiatives in the country.

Peering Policy Information

Peering Policy	
General Policy	Open
Multiple Locations	Not Required
Ratio Requirement	No
Contract Requirement	Not Required

Contact Information

Role	Name	Phone E-Mail
NOC		+55 11 5509-3510 noc@registro.br

Public Peering Exchange Points


Exchange ASN	IPv4 IPv6	Speed RS Peer
IX.br (PTT.br) Fortaleza ATMMPLA 22548	200.219.146.136 2001:12f8:0:9::136	10G <input checked="" type="checkbox"/>
IX.br (PTT.br) São Paulo ATMMPLA 22548	187.16.217.2 2001:12f8::1	100G <input checked="" type="checkbox"/>

Private Peering Facilities

Facility ASN	Country City
Nothing matched your filter You may filter by Facility, ASN, Country, City	

- Organization
- contact NOC team
- Internet Exchange

PeeringDB - advanced search - Internet Exchange

 **PeeringDB** [Register](#) or [Login](#)
[Advanced Search](#)

Exchanges | [Networks](#) | [Facilities](#)

Name

City

Country
ctrl/cmd click to select multiple

Continental Region
ctrl/cmd click to select multiple

IP Block

Media Type
ctrl/cmd click to select multiple


Ethernet
ATM
Multiple

[Reset](#) [Search](#)

[JSON](#) [CSV](#)

Name ▼	Media Type	Country	City
CABASE-BHB - IX Argentina (Bahia Blanca) <small>CABASE IXP Bahia Blanca</small>	Ethernet	AR	Bahía Blanca
CABASE-BRC - IX Argentina (Bariloche) <small>CABASE IXP Bariloche</small>	Ethernet	AR	Bariloche
CABASE-BUE - IX Argentina (Buenos Aires) <small>CABASE IXP Buenos Aires</small>	Ethernet	AR	Buenos Aires
CABASE-COR - IX Argentina (Cordoba) <small>CABASE IXP Córdoba</small>	Ethernet	AR	Córdoba
CABASE-DLC - IX Argentina (Santa Teresita) <small>CABASE IXP De La Costa</small>	Ethernet	AR	De La Costa

PeeringDB - advanced search - Facility

 Search here for a network, IX, or facility. [Register](#) or [Login](#)
[Advanced Search](#)

[Exchanges](#) [Networks](#) **Facilities**

Name
Address
City/ State/ Postal
Country
ctrl/cmd click to select multiple

Management
CLLI
NPA-NXX

Name Management	CLLI NPA-NXX	City Country	State Postal Code	Networks
Bynarya Bynarya SpA	- -	Santiago CL	- 0000	0
CMET CMET SACI	- -	Santiago CL	RM 8241692	0
entel - Ciudad de los Valles Entel Chile S.A.	- -	Pudahuel CL	RM 9020000	4
entel - CNT (torre entel) Entel Chile S.A.	- -	Santiago CL	RM 8340518	7
entel - Data Center Amunategui Entel Chile S.A.	- -	Santiago CL	RM 8340516	0

PeeringDB - Private informations

https://www.peeringdb.com/net/433

ed

Protocols Supported	<input checked="" type="radio"/> Unicast IPv4 <input type="radio"/> Multicast <input checked="" type="radio"/> IPv6
Last Updated	2019-02-13T17:15:09Z
Notes	<p>Peering Requests: https://isp.google.com/iwantpeering</p> <p>Peering Operational Issues: Contact noc@google.com 24x7</p> <p>We have a generally open peering policy: https://peering.google.com/#/options/peering</p> <p>This link also has information about our traffic delivery and management practices.</p> <p>Please note: not all Google content and services may be available at each PoP or Exchange.</p> <p>Google manages the following ASNs: AS36040, AS43515, AS36561, AS19527</p>

Peering Policy Information

Peering Policy	https://peering.google.com/#/options/peering
General Policy	Open
Multiple Locations	Preferred
Ratio Requirement	No
Contract Requirement	Not Required

Contact Information

Some of this network's contacts are hidden because they are only visible to authenticated users and you are currently not logged in.

Peering LAN 15169	2001:7f8:b6::3b41:1	<input checked="" type="checkbox"/>
B-IX 15169	185.1.30.10	20G <input checked="" type="checkbox"/>
BALT-IX 15169	2001:7f8:8e::10	<input checked="" type="checkbox"/>
BALT-IX 15169	77.241.206.42	10G <input checked="" type="checkbox"/>
BBIX Hong Kong 15169	2001:1ab8:8486::42	<input checked="" type="checkbox"/>
BBIX Hong Kong 15169	103.203.158.50	10G <input checked="" type="checkbox"/>
BBIX Osaka 15169	2403:c780:b800:bb00:0:1:5169:2	<input checked="" type="checkbox"/>
BBIX Osaka 15169	218.100.9.27	20G <input checked="" type="checkbox"/>
BBIX Singapore 15169	2001:de8:c:2:0:1:5169:1	<input checked="" type="checkbox"/>
BBIX Singapore 15169	103.231.152.35	10G <input checked="" type="checkbox"/>
BBIX Singapore 15169	2001:df5:b800:bb00:0:1:5169:1	<input checked="" type="checkbox"/>
BBIX Tokyo 15169	218.100.6.53	100G <input checked="" type="checkbox"/>

Private Peering Facilities

Facility ASN	Country City
151 Front Street West Toronto 15169	Canada Toronto
165 Halsey Meet-Me Room 15169	United States of America Newark
910Telecom 15169	United States of America Denver
AIMS Kuala Lumpur 15169	Malaysia Kuala Lumpur
AT TOKYO 15169	Japan Tokyo
BEMOBILE 15169	Ukraine Kiev
Bharti Airtel Santhome 15169	India Chennai
Blue City 15169	Oman Barka
Borovaya 57 15169	Russia St. Petersburg
CE Colo Prague 15169	Czechia Praue

PeeringDB - common mistakes – brazilians ASNs

- Email
- IP addressing
- Capacity of bandwidth of interfaces
- Facilities records and Internet Exchanges
- Links request to organization no need

PeeringDB - common mistakes - brazilians ASNs

Peer Name	IPv4	Speed ▲
ASN	IPv6	Policy
		20T
		Open
		1T
		Selective
Google LLC	187.16.216.55	500G
15169	2001:12f8::55	Open
Google LLC	187.16.218.58	500G
15169	2001:12f8::218:58	Open
Facebook Inc	187.16.220.240	400G
32934	2001:12f8::220:240	Selective
Facebook Inc	187.16.222.60	400G
32934	2001:12f8::222:60	Selective
Facebook Inc	187.16.222.61	400G
32934	2001:12f8::222:61	Selective
Facebook Inc	187.16.218.82	400G
32934	2001:12f8::218:82	Selective
Globo Comunicação e Participações S.A.	187.16.218.72	300G
28604	2001:12f8::218:72	Selective
Globo Comunicação e Participações S.A.	187.16.219.62	300G
28604	2001:12f8::219:62	Selective
Netflix	187.16.220.83	300G
2906	2001:12f8::220:83	Open
Netflix	187.16.223.20	300G
2906	2001:12f8::223:20	Open
Twitch	187.16.221.244	300G
46489	2001:12f8::221:244	Selective
Twitch	187.16.221.243	300G
46489	2001:12f8::221:243	Selective

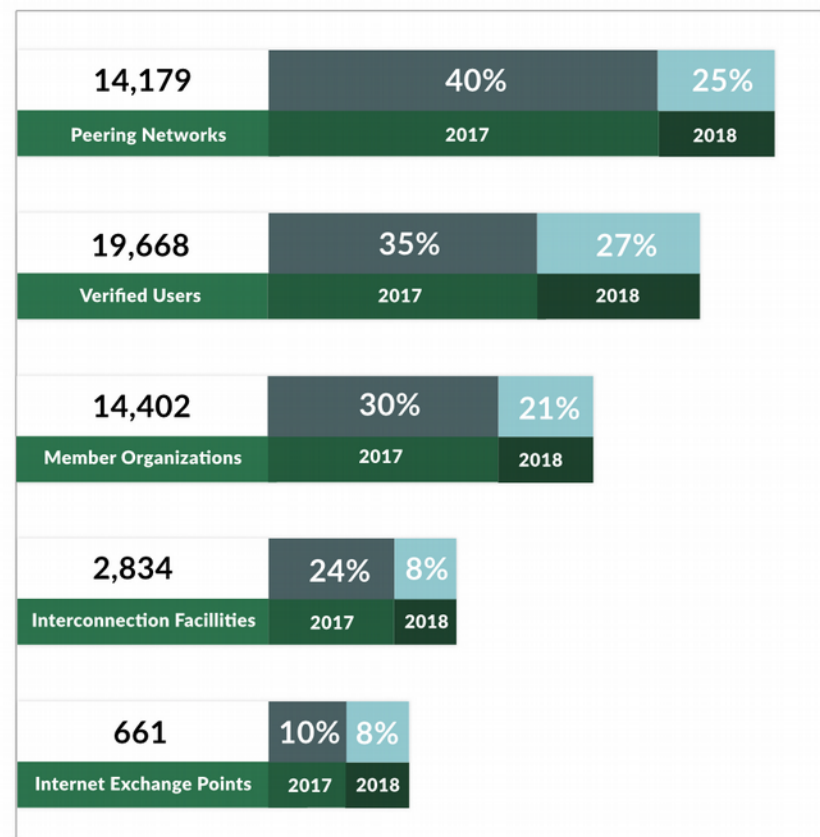
PeeringDB - How can we help?

- Check your information and make sure it is correct
- Please send feedback to us
- All ASNs should register

- Make materials and guides in Spanish

PeeringDB - statistics

Vital Statistics and Growth 2017 to 2018



www.peeringdb.com

Usage (2018)

Total Hits	174,096,231
Avg. Daily Hits	476,976
Unique Hits	717,774

Support Tickets (2018)

Total Support Tickets	9,915
Avg. Tickets Per Day	27
Avg. Resolve Time	5 h 51 min

PeeringDB - news

- Rebranding update last february
- Promotional t-shirts and stickers



PeeringDB – social networks

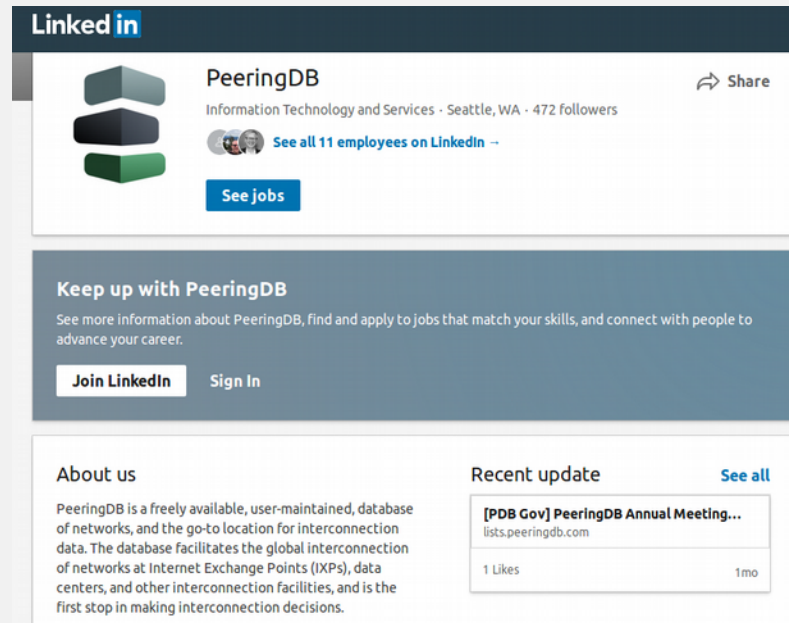


PeeringDB
1 h · 🌐

PeeringDB now has over 25,000 network connections to the 3154 facilities in the database! The facility with the most connections has 391. Can you guess which facility that is? **#peering #interconnection**

👍❤️ 15 1 comentário · 4 compartilhamentos

👍 Curtir 💬 Comentar ➦ Compartilhar



LinkedIn

PeeringDB
Information Technology and Services · Seattle, WA · 472 followers

👤 See all 11 employees on LinkedIn

🔍 See jobs

Keep up with PeeringDB
See more information about PeeringDB, find and apply to jobs that match your skills, and connect with people to advance your career.

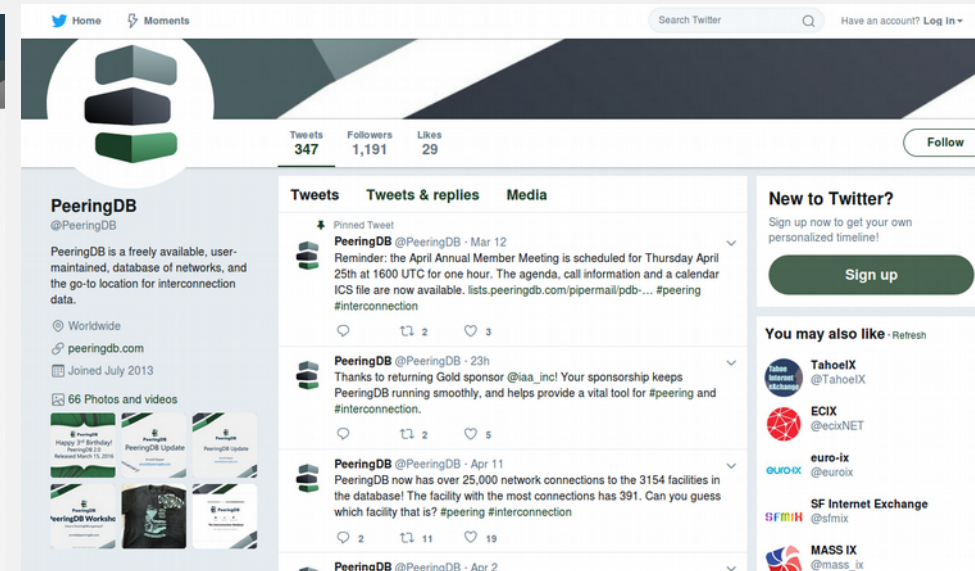
🔗 Join LinkedIn 🔑 Sign In

About us
PeeringDB is a freely available, user-maintained, database of networks, and the go-to location for interconnection data. The database facilitates the global interconnection of networks at Internet Exchange Points (IXPs), data centers, and other interconnection facilities, and is the first step in making interconnection decisions.

Recent update 🔗 See all

[PDB Gov] PeeringDB Annual Meeting...
lists.peeringdb.com

1 Likes 1mo



Twitter Home Moments

PeeringDB
@PeeringDB

Tweets 347 Followers 1,191 Likes 29

PeeringDB
@PeeringDB

PeeringDB is a freely available, user-maintained, database of networks, and the go-to location for interconnection data.

🌐 Worldwide
🌐 peeringdb.com
📅 Joined July 2013
📷 66 Photos and videos

Tweets Tweets & replies Media

Pinned Tweet
PeeringDB @PeeringDB · Mar 12
Reminder: the April Annual Member Meeting is scheduled for Thursday April 25th at 1600 UTC for one hour. The agenda, call information and a calendar ICS file are now available. lists.peeringdb.com/pipermail/pdb-... #peering #interconnection

PeeringDB @PeeringDB · 23h
Thanks to returning Gold sponsor @iaa_inc! Your sponsorship keeps PeeringDB running smoothly, and helps provide a vital tool for #peering and #interconnection.

PeeringDB @PeeringDB · Apr 11
PeeringDB now has over 25,000 network connections to the 3154 facilities in the database! The facility with the most connections has 391. Can you guess which facility that is? #peering #interconnection

New to Twitter?
Sign up now to get your own personalized timeline!
📝 Sign up

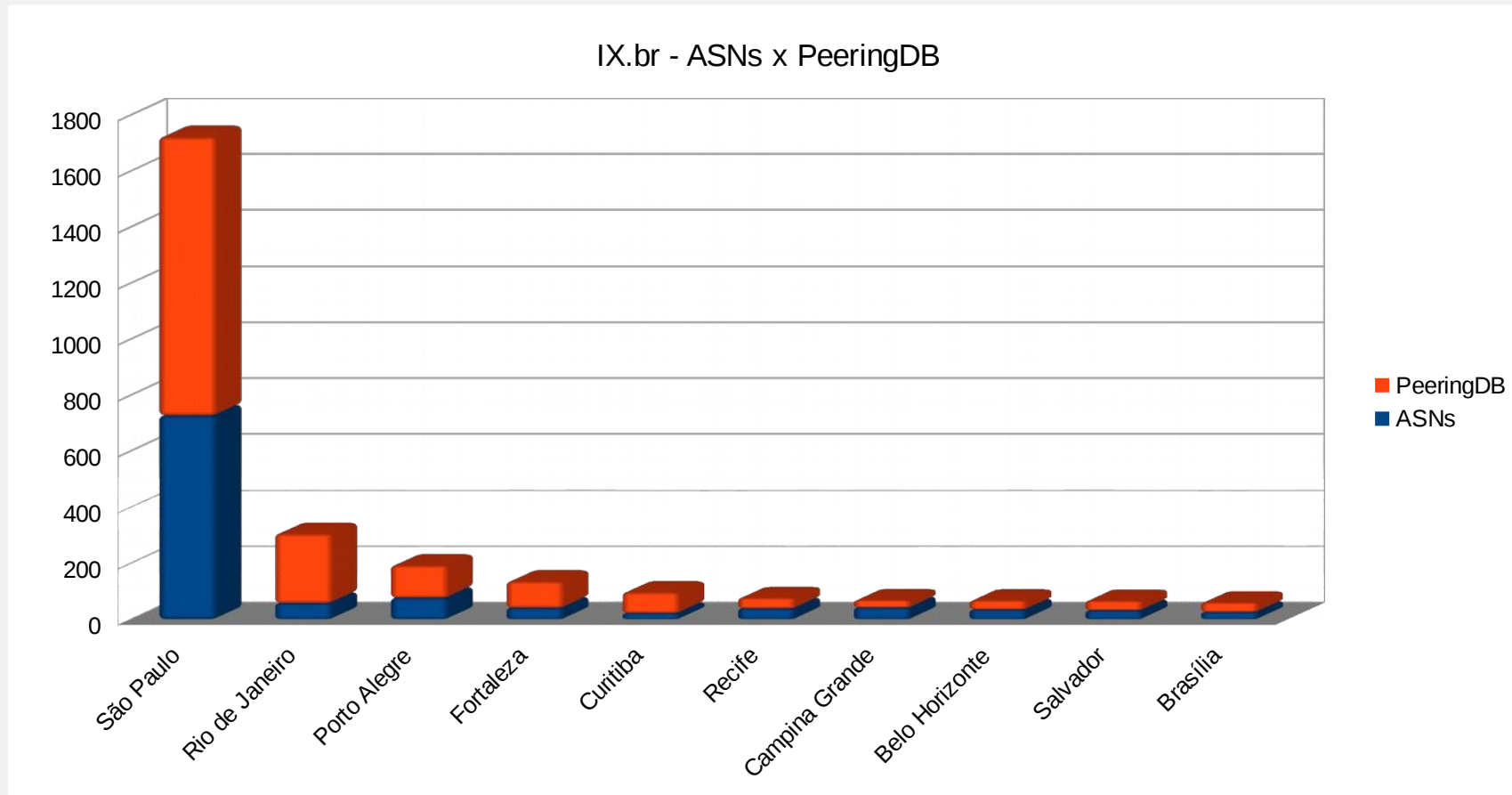
You may also like · Refresh

- TahoeIX @TahoeIX
- ECIX @ecixNET
- euro-ix @euroix
- SF Internet Exchange @sfmix
- MASS IX @mass_ix

PeeringDB - Autonomous Systems - IX.br

Location	ASNs	PeeringDB	Percentage
Sao Paulo	1723	995	57%
Rio de Janeiro	306	248	81%
Porto Alegre	193	116	60%
Fortaleza	136	95	69%
Curitiba	97	75	74%
Recife	77	38	50%
Campina Grande	69	27	40%
Belo Horizonte	68	33	48%
Salvador	67	35	51%
Brasilia	61	35	56%

PeeringDB - Autonomous Systems - IX.br



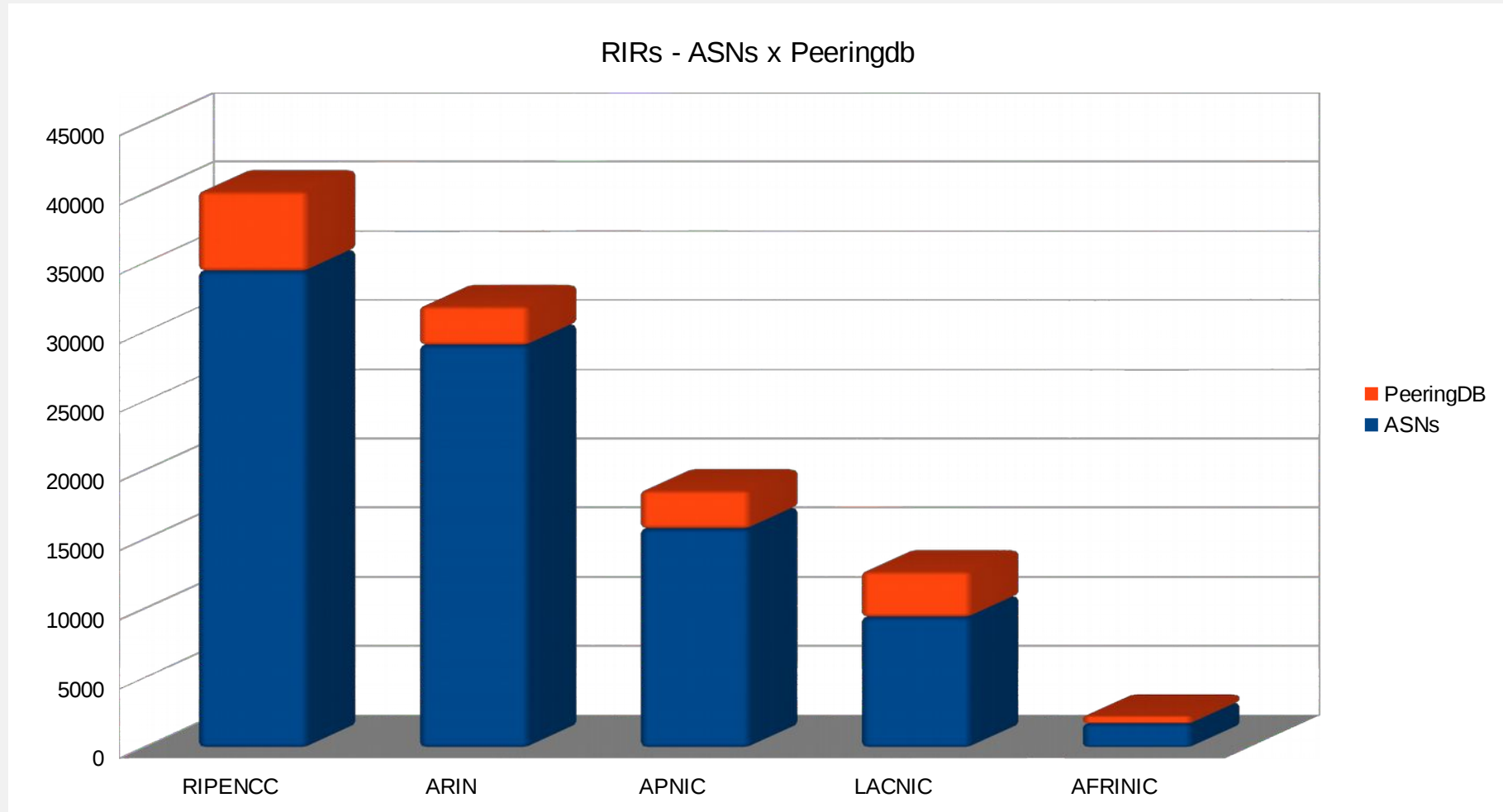
PeeringDB – Latin America database

Countries	IXPs	Facilities	Networks	Network at IXP	Network in Facilities
Argentina	26	15	211	194	62
Bolivia	1	1	1	0	1
Brazil	33	139	1345	1276	409
Chile	8	53	281	208	220
Colombia	2	6	28	14	23
Costa Rica	1	4	13	11	3
Cuba	0	0	0	0	0
Ecuador	4	4	23	22	2
El Salvador	0	0	0	0	0
Guatemala	0	3	3	0	3
Haiti	1	0	5	5	0
Honduras	1	0	4	4	0
Mexico	1	12	33	8	29
Nicaragua	0	1	0	0	0
Panama	0	3	3	0	3
Paraguay	1	5	4	0	4
Peru	1	4	4	1	4
Dominican Republic	0	3	5	0	5
Uruguay	0	1	0	0	0
Venezuela	0	0	0	0	0

PeeringDB – RIRs database

RIRs	ASNs	PeeringDB	Percentage
RIPENCC	34466	5736	16%
ARIN	29098	2818	9%
APNIC	15836	2750	17%
LACNIC	9433	3291	34%
AFRINIC	1717	589	34%

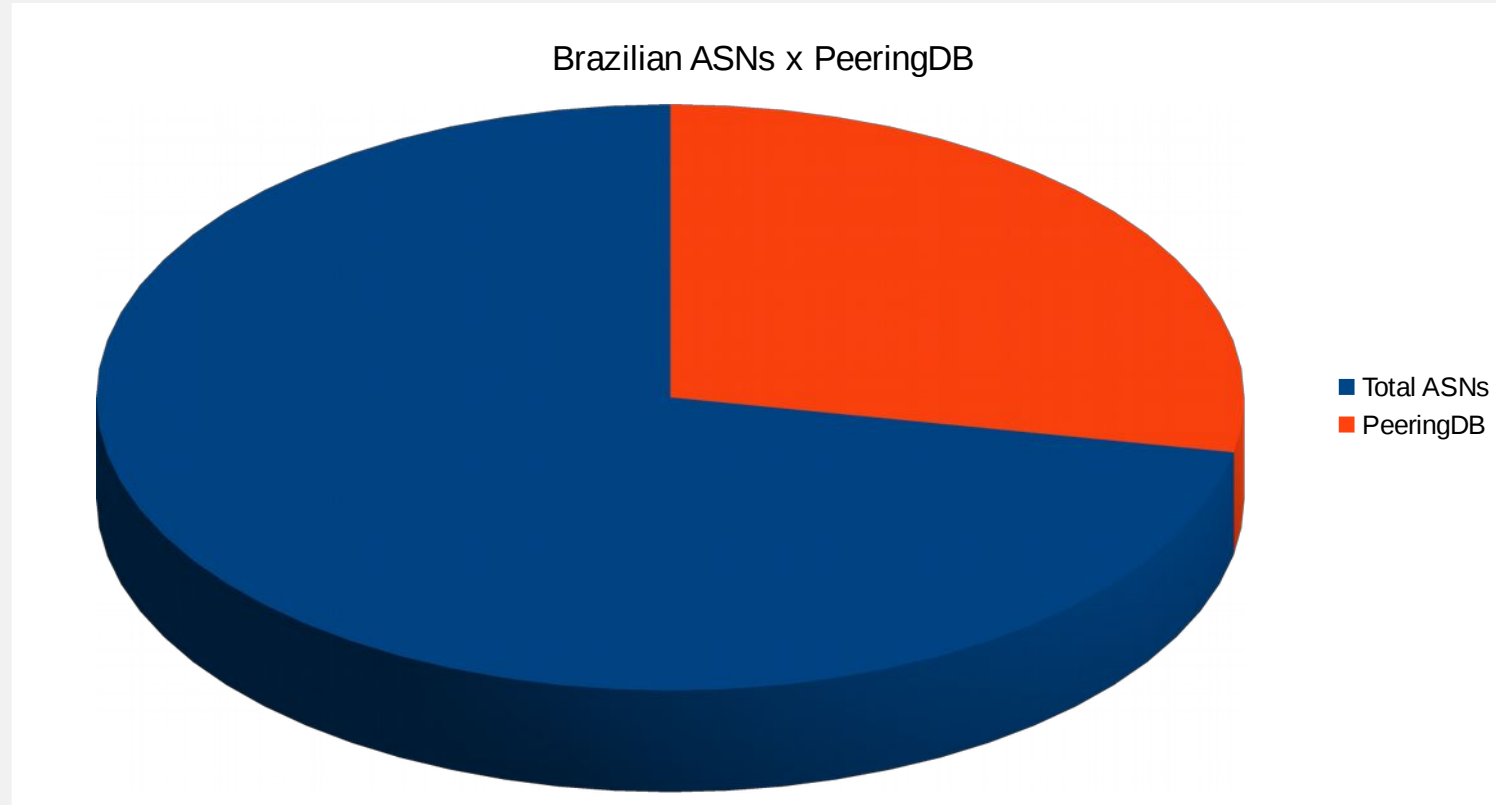
PeeringDB - RIRs database



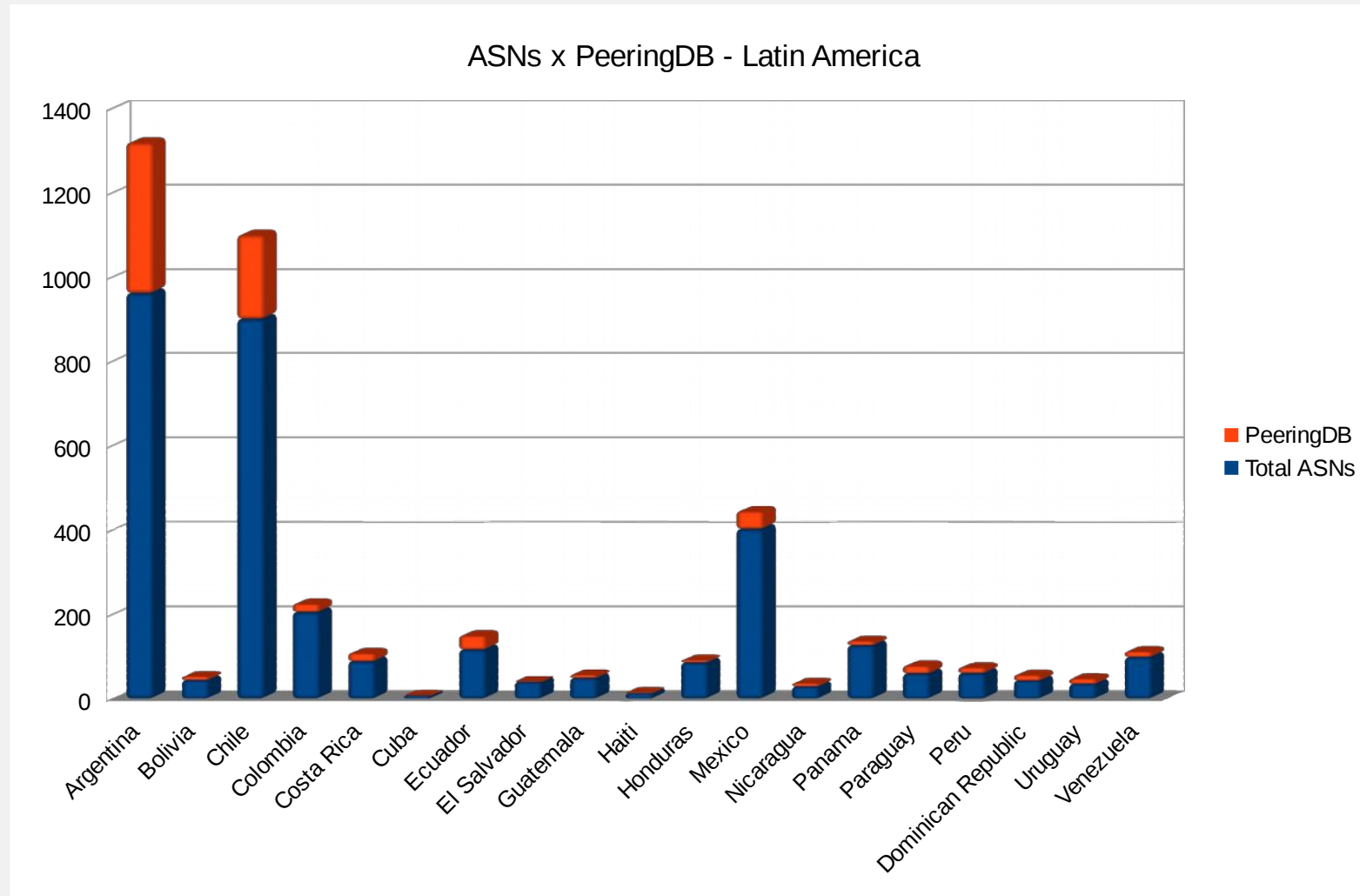
PeeringDB – Latin America ASNs

Countries	Total ASNs	PeeringDB	Percentage
Argentina	962	357	37%
Bolivia	44	9	20%
Chile	901	199	22%
Colombia	206	19	9%
Costa Rica	89	19	21%
Cuba	7	1	14%
Ecuador	117	33	28%
El Salvador	40	1	2%
Guatemala	49	8	16%
Haiti	13	2	15%
Honduras	86	6	7%
Mexico	403	42	10%
Nicaragua	29	8	27%
Panama	127	10	7%
Paraguay	60	18	30%
Peru	61	13	21%
Dominican Republic	43	13	30%
Uruguay	35	13	37%
Venezuela	99	13	13%

PeeringDB - Latin America ASNs



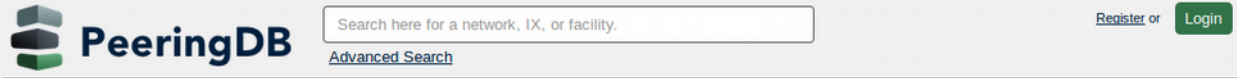
PeeringDB - Latin America ASNs



PeeringDB - supporters



PeeringDB - sponsors



DIAMOND SPONSORS



PLATINUM SPONSORS



GOLD SPONSORS



SILVER SPONSORS





PeeringDB

Questions?

<https://www.peeringdb.com/>

<http://docs.peeringdb.com/>